

Sahara II Drying System



The Sahara II is new inside and out. Designed for high-speed presses that need higher exhaust rates and positive web

The Sahara II is a natural evolution of ASI drying superiority. Incorporating new and patented technology, it provides higher drying capacity and increased web control. From doors to ductwork, the Sahara II is designed for maximum production and minimum maintenance.

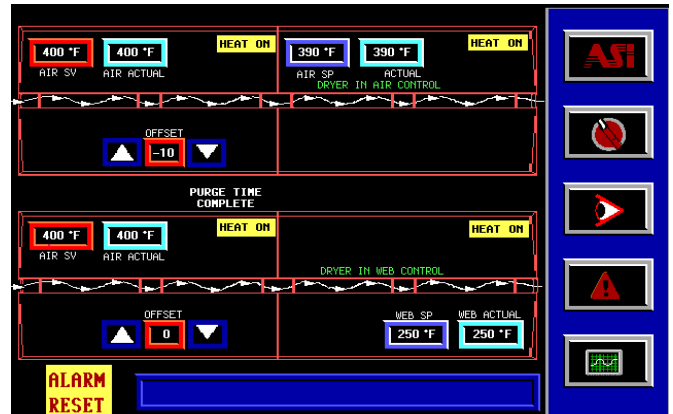
The combination of ASI's Soft-Dri III air bars and patented air-envelope return-air system eliminates web shift while delivering higher and more uniform heat transfer.

As with all ASI products, the Sahara II has been designed and fabricated with performance and practicality in mind. From interchangeable air bars to automatic make-up air control that eliminates dryer sapping, the Sahara II offers exceptional performance and reliability, ease of maintenance, and maximum product throughput.

Cost-effective performance and state-of-the-art technology, the Sahara II is *simply the best* in the industry.

Performance

- Patented air envelope return air system with new internal exhaust ductwork eliminates web shift.
- Automatic make-up air control to eliminate dryer sapping.
- Inlet vane control damper enables reduced horsepower start-ups.
- Soft-Dri III air bars with patented double chamber air distribution delivers uniform cross-web airflow and optimum web stability.
- Allen Bradley (or equivalent) PLC controls with 12 inch color monitor.

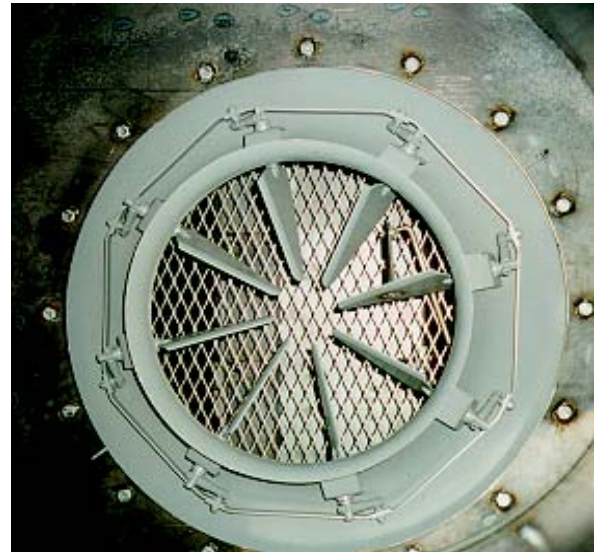


Set Point Screen – user friendliness is designed by & for pressmen.

Sahara II Drying System

Ease of Maintenance

- New one-piece construction minimizes installation time and cost.
- All air bars completely interchangeable.
- No plenum expansion joints to maintain.
- Access doors at dryer ends for easy inspection of internal parts.
- Burner located on discharge of supply fan; eliminates potential for heat streaks and fan damage.
- Modem equipped for on-line problem solving.



The inlet vane control adjusts outlet velocity when handling extra sensitive lightweight webs. IVC maintains perfect above and below web air balance throughout its range.



Operations Efficiency

- Soft-Dri III air bars provide nozzle velocity of 12,500 fpm for maximum heat transfer at minimum energy input and fan rpm.
- Dryer surfaces insulated with 4 inches of insulating wool.
- Inlet vane control enables reduced horsepower start-ups.
- ODP high-efficiency motors with across-the-line (FVNR) starters, heater elements, and magnetic short-circuit protection.

Warranties

- Five-year warranty on air bar and door gaskets.
- Three-year warranty on all ASI manufactured parts.

Find Out How Sahara II Can Help Your Plant

For more information on the Sahara II drying system and how it can be applied to your operation, as well as other ASI products for the graphic arts industry, please contact ASI.



Division of Thermal Technologies, Inc.

... Where New Technology is in the Air

1031 Ontario Road ■ P. O. Box 9428
Green Bay, WI 54308-9428
Phone: 920-468- 5477 ■ Fax: 920-468-0931
Net: www.advancesystems.com